

# TS500



## Mimaki TS500-1800 Dye-Sublimation Printer

High speed, dedicated dye-sublimation printer  
for production transfer applications





TEXTILES



APPAREL

## Dye sublimation performance.

New developments in ink plus Mimaki technology has broadened the scope of transfer sublimation applications that can be created with the Mimaki TS500-1800. This versatile printer is ideal for the growing soft signage market, polyester sportswear, specialty textiles, along with sublimation onto hard surfaces such as tile and sporting equipment.



FLAGS

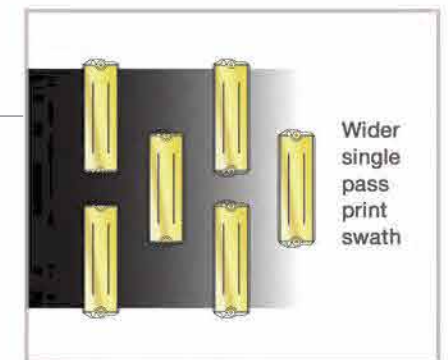
SPORTSWEAR





# Production digital textile.

The sublimation market is booming. The convergence of quality high-speed printing and custom sublimation applications puts the Mimaki TS500-1800 sublimation printer in the forefront of an increasing competitive climate for wide-format printers. Specifically designed for the textile market that demands high volume, high quality transfer paper digital imaging, the TS500 is one of the fastest transfer sublimation printers in the industry with an output of 1614 sqft/hr. The fast drying sublimation inks produce vivid, brilliant color reproduction. Lower running costs and longer continuous printing capability with the Mimaki degassing 2L bulk ink module adds up to greater production that will outperform your expectations.



## STAGGERED PRINT HEAD CONFIGURATION FOR SPEED

The key to the TS500's speed are the 6 print heads arranged in three staggered rows. This configuration enables a larger print swath and faster through-put of the transfer media.



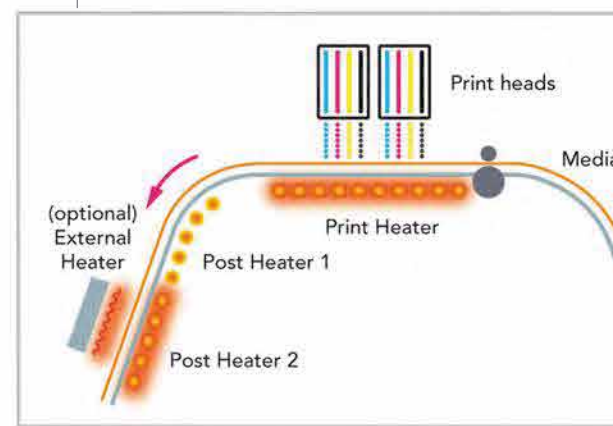
## ECONOMICAL INK STATION WITH DEGASSING

The TS500 employs a bulk ink station that includes an embedded degassing module – MDM-20. This enables the TS500 to use economical, undegassed 2L bottled ink. The MDM-20 efficiently degasses and removes bubbles from the ink before it gets to the print heads.



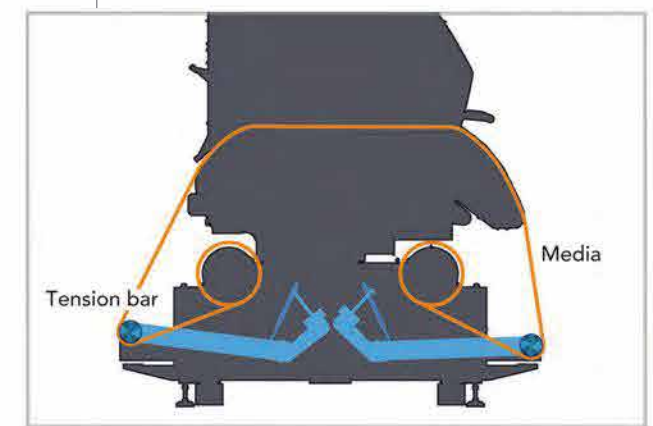
## UISS FACILITATES LONG PRODUCTION RUNS

Mimaki's Uninterrupted Ink Supply System (UISS) facilitates long, unmanned print runs by automatically switching the ink flow from a color's emptied ink container to the other full container of the same color.



## OPTIMIZED INK DRYING

Internal heaters accelerate ink drying by heating the media during and after printing. These temperature controlled heaters can be increased for shortened ink drying or decreased for heat-sensitive media.



## AMF MEDIA STABILIZER

High-speed dye-sublimation imaging requires stable media feed and take-up. The Automatic Media Feeder mechanism enables stable, continuous high-speed printing of long and heavy rolled media by maintaining consistent media tension.

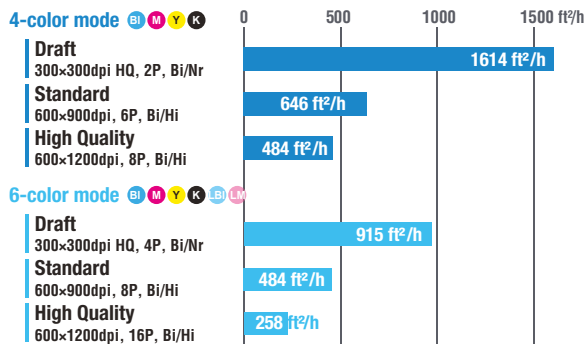
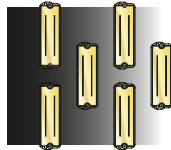
# TS500 features-at-a-glance

- Transfer dye-sublimation printer
- Extraordinary print speeds up to 1614 sqft/hr
- Print resolutions up to 1200 dpi
- Available in 74-inch media width

## THE LATEST SUBLIMATION TECHNOLOGY

### Staggered print head configuration.

Dual print heads arranged in three staggered rows enables a larger printing swath and the ability to image at top print speeds of 1614 sqft/hr.



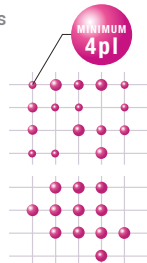
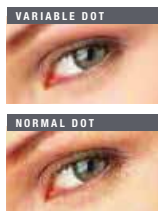
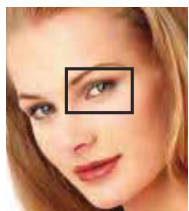
### One of the world's fastest sublimation printers.

Two newly developed print heads with 4 rows of 320 nozzles per head are arranged in-line. This double coverage results in faster printing and superb resolution quality.

### Smooth, high definition color with variable dot printing.

Variable dot printing produces a smoother, more natural gradation without the granular appearance seen in fixed-dot printing.

Variable dot sizes at a minimum of 4pi offers higher definition over standard dots.



### MDM-20 ink degassing facilitates bulk ink containers.

An embedded degassing module "MDM-20" enables the TS500-1800 to use lower price degassed bottle inks. Before the ink reaches the print heads, gasses or bubbles inside the ink are eliminated allowing for more consistent inkjetting.

### Newly developed sublimation ink.

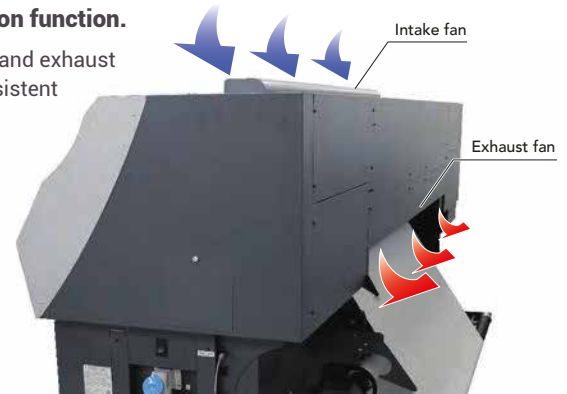
Mimaki's Sb300 sublimation ink dries faster and reproduces deep and vibrant colors for impressive results.



## AUTOMATED QUALITY ASSURANCE

### Ink mist reduction function.

Embedded intake and exhaust fans create a consistent airflow forcing ink mists through the printer filters. The reduction of ink mists guarantees cleaner, highly accurate imaging.



### Real-time reliability.

TS500-1800 printers are equipped with Mimaki's NozzleCheck Unit (NCU) that automatically detects and cleans clogged nozzles while the machine is printing. The Nozzle Recovery System (NRS) takes over if for any reason the nozzle fails to clear and the printer experiences nozzle drop out. Rather than stopping, the printing operation can continue by registering with NRS that a particular nozzle has experienced a drop out.

#### With Nozzle Recovery System



#### Without Nozzle Recovery System



## OPTIONAL MFJ500-1800 BULK ROLL MEDIA SYSTEM

### Exceptional bulk media handling.

The industrial design of the MJF500-1800 system can handle paper rolls up to 600 lbs. with an external diameter of 20" giving digital textile producers the ability to take full advantage of the high throughput capabilities of the TS500-1800 printer. Using this bulk roll media handling system, the TS500 can become more productive by minimizing material change interruptions

while also increasing profitability by printing long production runs of cost-effective transfer paper for sublimation to a wide range of textiles.



# RasterLink6

Intuitive and user-friendly operation



## SOPHISTICATED RIP SOFTWARE MAXIMIZES PERFORMANCE

### Simultaneous layer printing.

RasterLink6 software enables simultaneous three-layer printing for two-sided viewing – color > white > color, or for white over/underprinting.

### Simplified RIP operations.

The “Register as Favorite” feature saves regularly used RIP layouts and operations in a single window for quick retrieval.

### Web software update function.

Program updates and profiles can be downloaded via the Mimaki website.

## TS500-1800 SPECIFICATIONS | INKS

| Item                                    |                   | Specifications  |
|---|-------------------|---|
| Print Head                              |                   | On-demand piezo head (6 print heads with 3 staggered configuration)                                       |
| Print Speed (300x300, 2pass, Bi Nr)     |                   | 4-color: 1614 sqft/hr 6-color: 915 sqft/hr  |
| Print Resolution                        |                   | 300, 450, 600, 900, 1200 dpi  |
| Ink                                     | Sublimation       | Sb300: 4-color (Bl, M, Y, K) 6-color (Bl, M, Y, K, LBl, LM)   |
|   | Ink Supply System | Bulk Ink Station; 2L Bottles  |
| Maximum Print Width                     |                   | 74.4 in. (1,890 mm)   |
| Media –<br>Dye-Sub<br>Transfer<br>Paper | Maximum Width     | 75.2 in. (1,910 mm)   |
|   | Thickness         | 0.2 mm or less  |
|   | Roll Weight       | 132 lb. (60 kg) or less   |
|   | Roll Diameter     | Outer: 11.8 in. or less Inside: 3 in.   |
|   | Print Aspect      | Outside   |
| Cutter                                  |                   | Y-direction cutter after head section   |
| Drying Device                           |                   | 3-Way Intelligent Heater (pre/print/post),<br>External drying heater (optional)                           |
| Media Take-Up Device                    |                   | Roll take-up device, inside/outside selectable  |
| Print Gap                               |                   | 1.5 mm ~ 7.0 mm (automatic adjustment)  |
| Interface                               |                   | USB2.0  |
| Applicable Standard                     |                   | VCCI class A, FCC class A, UL 60950-1<br>CE Marking (EMC, low voltage and machinery directive), CB report |
| Power Specification                     |                   | Single-phase AC 200~240V, 20 A or under   |
| Power Consumption                       |                   | Less than 4,800 W   |
| Operational Environment                 |                   | Temperature: 64°F - 86°F  |
|   |                   | Humidity: 35% - 65% Rh (non-condensing)   |
| Dimensions (W×D×H)                      |                   | 150" x 55.1" x 66.9"  |
| Weight                                  |                   | 1,653 lbs. (750 kg)   |

| Item                 | Color         | 2L Bottle    |
|----------------------|---------------|--------------|
| Sb300<br>Sublimation | Blue          | SB300-BL-BB  |
|                      | Magenta       | SB300-M-BB   |
|                      | Yellow        | SB300-Y-BB   |
|                      | Black         | SB300-K-BB   |
|                      | Light Blue    | SB300-LBL-BB |
|                      | Light Magenta | SB300-LM-BB  |

Inkjet printers print using extremely fine dots, so colors may vary slightly after replacement of the printing heads. Also note that if using multiple printer units, colors could vary slightly from one unit to another due to slight individual differences.

Some of the samples in this brochure are artificial renderings. Specifications, design and dimensions stated may be subject to change without notice (for technical improvements, etc.). The corporate names and merchandise names written in this brochure are the trademarks or registered trademarks of their respective companies.

# Celupal

● ● ● ● DISTRIBUIDOR LÍDER EN PAPELES, PLOTTERS E INSUMOS

|  |  |  |  |  |
|--|--|--|--|--|
| <b>Corporativo</b><br>01800 000 CELU<br>info@celupal.com       | <b>Sucursal Toluca</b><br>(722) 283 1039<br>toluca@celupal.com   | <b>Sucursal Querétaro</b><br>(422) 340 7722, 23<br>queretaro@celupal.com | <b>Sucursal Celupal Monterrey</b><br>(81) 1936 6074<br>monterrey@celupal.com | <b>Sucursal Guadalajara</b><br>(33) 3619 5046<br>guadalajara@celupal.com |
| <b>Sucursal Mérida</b><br>(999) 946 0908<br>merida@celupal.com | <b>Sucursal Algarín</b><br>(55) 5519 2189<br>algarin@celupal.com | <b>Sucursal Chihuahua</b><br>(614) 417 0071<br>chihuahua@celupal.com     | <b>Sucursal Puebla</b><br>(222) 222 9416<br>puebla@celupal.com               | <b>Sucursal Cancún</b><br>(998) 206 8489<br>cancun@celupal.com           |

# Mimaki

mimakiusa.com

Mimaki USA, Inc. | 150-A Satellite Blvd. Suwanee, GA 30024 | 888-530-4021 | info@mimakiusa.com

© 2015 Mimaki USA, Inc. All rights reserved. Ver. 1.0